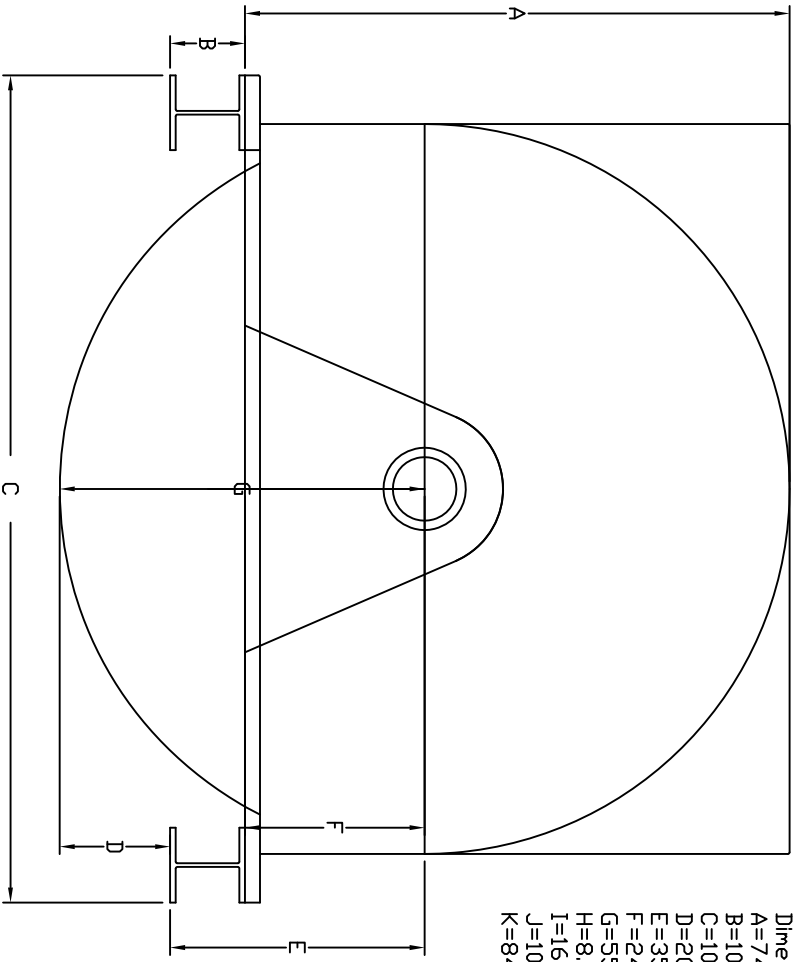
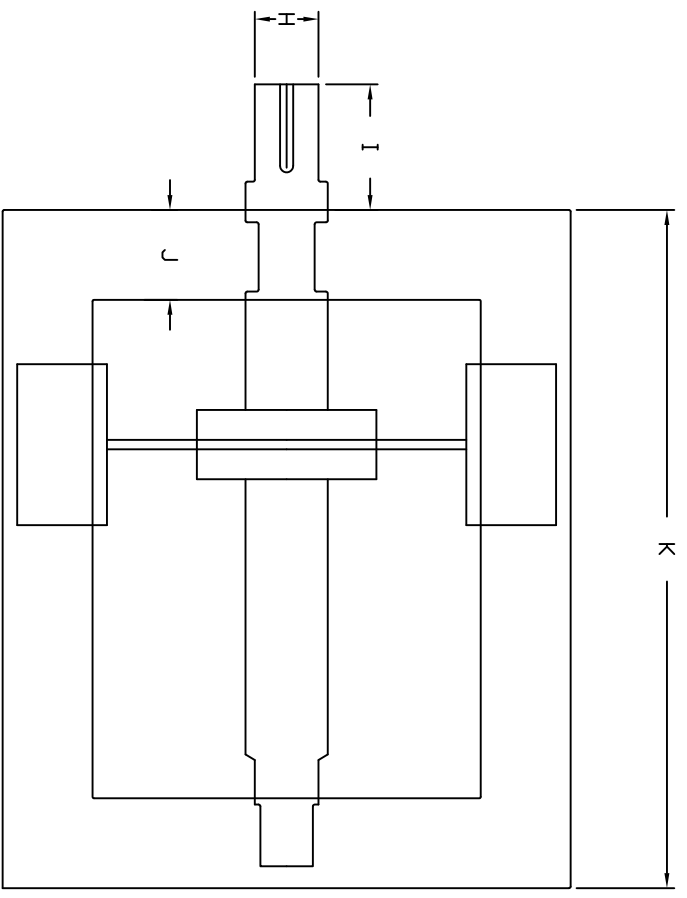


1,250hp 240rpm 4160volts CGE Motor



- Dimensions
- A=74"
 - B=10.75"
 - C=108.75"
 - D=20"
 - E=35"
 - F=24.25"
 - G=55"
 - H=8.25"
 - I=16"
 - J=10"
 - K=84"



Note: Both ends of shaft are drill for air clutch
 Key is 2" wide x 1 1/2 high