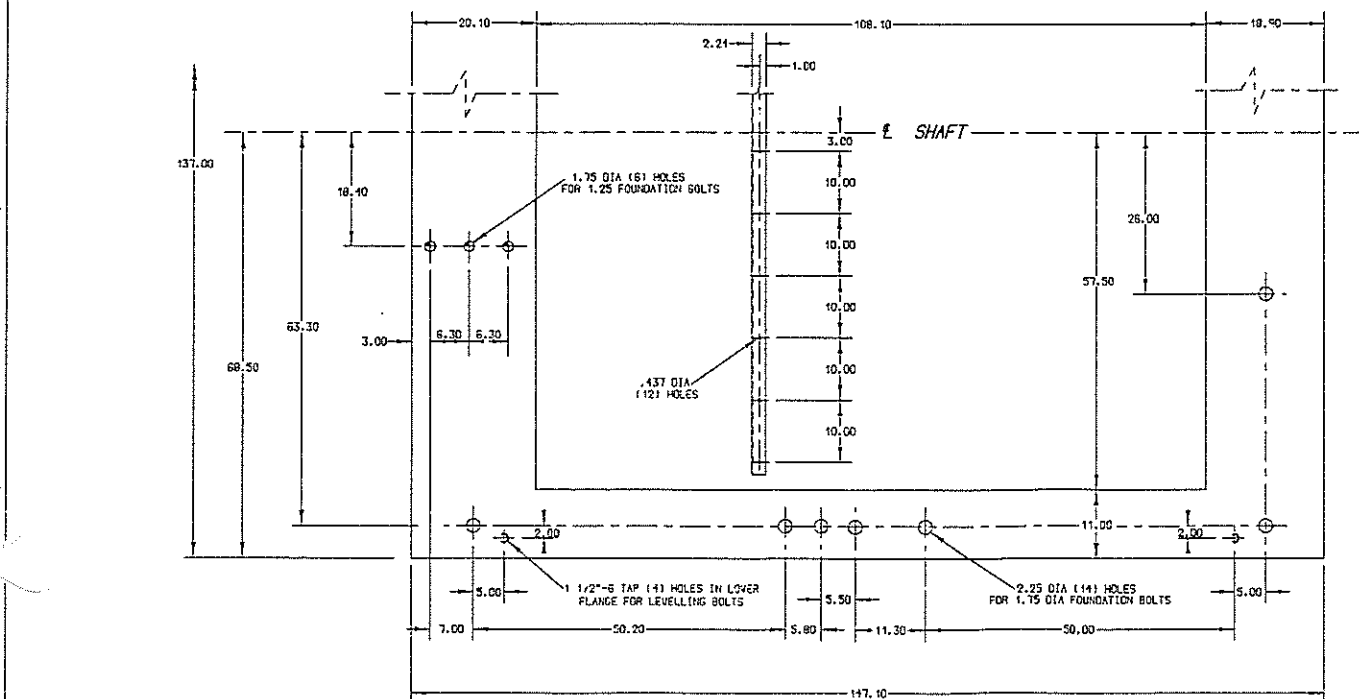
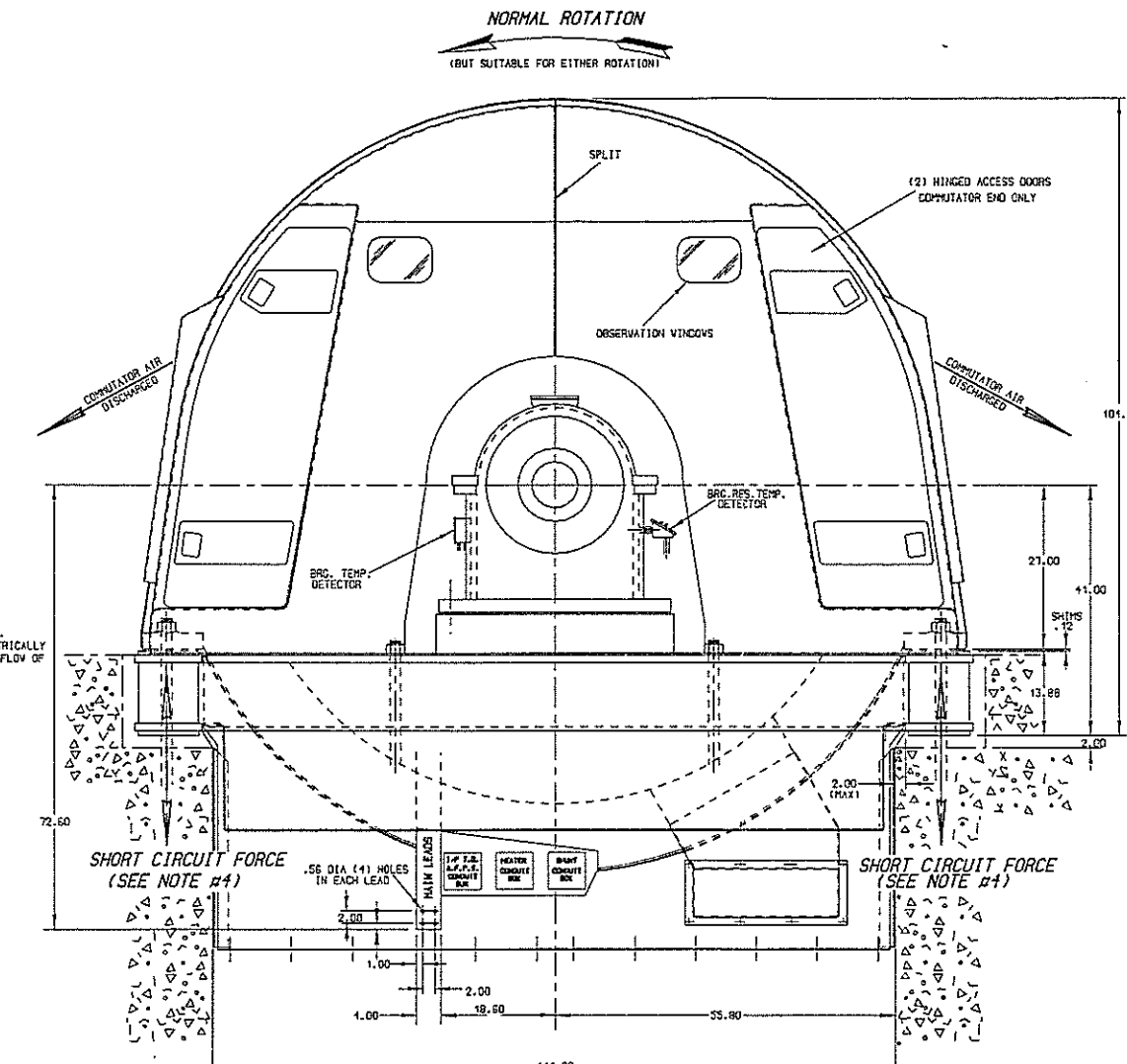
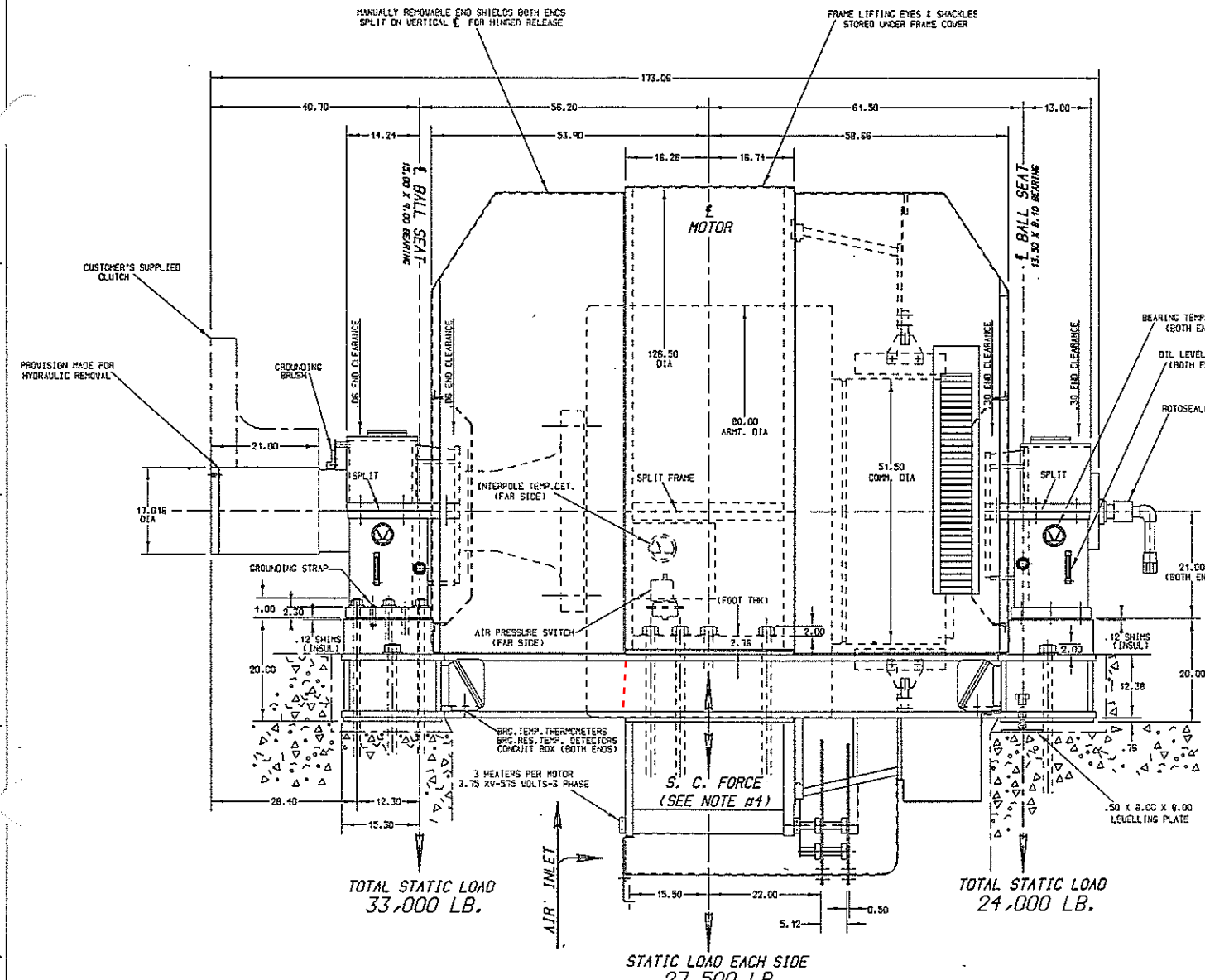


# OUTLINE SEHI-AUTOGENOUS MILL MOTOR

FIRST MADE FOR WRIGHTS / INCO CLARABELLE

PT	MACHINE	TYPE	POLES	CLASS	R.P.M.	VOLTS	REQUISITION NUMBER	ENGINEERING NOTICE
1	MOTOR	HCF/140	12	5500 HP	180 / 189	750	9280-018-0W2	139313



### "TO BE NOTED BY CUSTOMER"

1. BASE IS NOT DESIGNED TO BE SELF-SUPPORTING. FOUNDATION MUST BE SO DESIGNED AS TO PREVENT DEFLECTION.
2. FOUNDATION NUTS, BOLTS & WASHERS ARE NOT SUPPLIED BY G.E. CANADA LTD.
3. LEVELLING BOLTS & PLATES ARE SUPPLIED BY G.E. CANADA LTD. (CAPACITY SUFFICIENT FOR BASE ONLY).
4. MAXIMUM SHORT CIRCUIT DOWNWARD PRESSURE OR UPWARD PULL (FRAME WEIGHT NEGLECTED) PER MAGNET FRAME FOOT IS 164,250 LB. FOUNDATION BOLTS TO HAVE MINIMUM YIELD STRENGTH OF 37,500 P.S.I.
5. WASHERS UNDER NUTS ON FOUNDATIONS BOLTS - MATERIAL TO BE MEDIUM CARBON STEEL AISI-1045 .30 THICK
6. CERTAIN BOLTS & NUTS MUST BE TIGHTENED TO SPECIFIED TORQUES OR BY OTHER TIGHTENING TECHNIQUES. SEE TABLE AT RIGHT.
7. BOTH BEARINGS ARE INSULATED EXTERNALLY WITH SHIMS.
8. DRIVE END COUPLING IS HYDRAULICALLY REMOVABLE.
9. WHEN HANDLING, ARMATURE MUST NOT BE RESTED ON ITS OUTSIDE DIAMETER. ARMATURE CAN BE RESTED IN A RUBBER LINED BUNK (SHAPE TO CURVATURE OF ARMATURE) - SUPPLIED BY G.E. CANADA FOR SHIPPING.
10. REFER TO CONTRACT FOR MATERIAL TO BE SUPPLIED BY G.E. CANADA. THE AMOUNT OF SUCH MATERIAL IS NOT INCREASED BY ANYTHING SHOWN ON THIS DRAWING.
11. CAUTION! BEFORE INSTALLING & OPERATING, READ INSTRUCTIONS.
12. MOTOR REQUIRES A TOTAL OF 26,000 C.F.M. AT 5.5 INCHES V.S.P. (NOTE: AIR INLET TEMPERATURE TO BE A MAXIMUM OF 40°C)
13. MOTOR DRIVE END BEARING LIMITS THE END FLOAT OF ARMATURE TO .06" IN EITHER DIRECTION. DRIVEN SHAFT MUST BE LIMITED TO LESS THAN THIS & SHOULD BE IN ORDER OF .04" IN EITHER DIRECTION. COUPLING END FLOAT SHOULD BE HELD WITHIN THE SAME 4.04" LIMIT.

#### APPROXIMATE WEIGHTS

STATOR (INCLUDING GRIND BRIGGING & END SHIELDS)	51,000 LB.
ARMATURE (INCLUDING HALF COUPLING)	48,000 LB.
15.0 X 9.0 BEARING PEDESTAL	3,400 LB.
13.5 X 8.1 BEARING PEDESTAL	3,100 LB.
BASE	6,500 LB.
<b>TOTAL</b>	<b>112,000 LB.</b>

#### TIGHTENING INFORMATION - NUTS, BOLTS & STUDS

DESCRIPTION	SIZE	MATERIAL	TIGHTENING INFORMATION	LUBRICATION
D.E. STUD SHAFT TO ARMATURE SPIDER	2 1/2"-8	305F4C2	400111379UG	MOLYCOOTE "C"
D.O.E. STUD SHAFT TO ARMATURE SPIDER	2"-8	M-4210	2000 LB. FT.	MOLYCOOTE "C"
MAGNET FRAME JOINT BOLTS	1"-8	CO1C5	500 LB. FT.	MOLYCOOTE "C"
MAIN POLES	1 1/4"-8	M-4210	500 LB. FT.	TEFLON #304
INTERPOLES	1"-8	M-5444	300 LB. FT.	TEFLON #304
BUS BAR CONNS AT MAGNET FRAME SPLITS	1/2"-13	CO1C5	60 LB. FT.	OILIT
FOUNDATION BOLTS	SEE NOTE #4			MOLYCOOTE "C"
BUS RING "A" CLAMPS	3/8"-16	CO1C5	25 LB. FT.	OILIT
BUS RING "H" CLAMPS	1/2"-13	CO1C5	60 LB. FT.	OILIT
13.5 X 8.1 BRG PED FOOT BOLTS	1 1/4"-8	M-4210	650 LB. FT.	MOLYCOOTE "C"
13.5 X 8.1 BRG PED JOINT BOLTS	1"-8	CO1C5	500 LB. FT.	MOLYCOOTE "C"
15.0 X 9.0 BRG PED JOINT BOLTS	1"-8	CO1C5	500 LB. FT.	MOLYCOOTE "C"

REVISING	PRINTS TO
1 OCT ADDED 2.30 & 20.00	L1
2 DEC CHANGES PER CSP	
3 APR CUSTOMER'S REQUEST	
4 JAN REVISION ON CSP	
5 11/90 "H" SIZE ENG	
6 MAY NOTE #1 WAS FOR CSP	
7 12/90 13.50 X 8.10 BEARING	

NOTE: COPY ON MICROFILM AND CADD ONLY