

BRAKE OPERATION

- (1) SOLENOIDS ENERGIZED BRAKE RELEASES
- (2) SOLENOIDS DE-ENERGIZED BRAKE APPLIES

MOTOR STARTER
FURNISHED BY GEN. ELEC.
ITEM 3 - No. 76
SEE P.O. AIG 81740

PRESSURE 100-125 P.S.I.

FILL FILTER WITH OIL HAVING AN
ANILINE POINT BETWEEN 180° AND 220° F.
EQUIVALENT TO ASTM NO. 2 OIL.
SOCOLY VACUUM DTE - LIGHT OR EQUAL

ENERGIZED-OPEN TO PRESSURE
DE-ENERGIZED-OPEN TO EXHAUST

FREE FLOW IN DIRECTION
OF ARROW FOR BRAKE
RELEASE.
CONTROLLED FLOW IN OPPOSITE
DIRECTION FOR BRAKE APPLICATION

- 4 FLOW CONTROL VALVE**
- (1) ADJUST SO THAT BRAKE WILL STOP A MAXIMUM DOWN GOING LOAD AT FULL SPEED SAFELY WITHIN THE DECELERATION DISTANCE DURING AN EMERGENCY STOP DO NOT SLOW BRAKE APPLICATION ANY FURTHER
 - (2) SPEED OF APPLICATION MAY HAVE TO BE INCREASED TO PROVIDE ACCURATE STOP FOR SPOTTING IN NORMAL OPERATION
 - (3) LOCK VALVE IN THIS POSITION

DO NOT PLUG TOP DRAIN

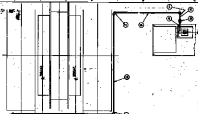
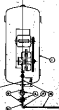
SPECIFICATION FOR 1 SET						
NO. REQ.	NAME OF PART	ITEM NO.	DWG. NO.	PART CODE NO. OR PART NO.	MATERIAL MAT'L CODE NO.	REMARKS OR PATT. NO.
1	INGERSOLLRAND MOD.HBC1 AIR COMPRESSOR	1				
1	3" CROWN COMB. FILTER & LUBRICATOR-STYLE 62	2				1/4" PIPE
2	3 WAY SOLENOID AIR VALVE MOD. 31S 25	3				115V-60CYC. 1/4" PIPE
2	AIR CONTROL VALVE	4		1/4" PIPE SIZE		HANNIFIN MOD# 525 1/4" PIPE
2	1/4" TEE	5		1575031		
2	1/4" 90° STREET ELBOW	6		1540573		
4	1/4" ELBOW 90°	7		1535573		
2	1/2" x 1/4" HEX BUSHING	8		1504328		
2	3/8" x 1/4" HEX BUSHING	9		1504324		
4	1/4" x 3/2" NIPPLE	10		1551334		
3	1/4" x 5/2" NIPPLE	11		1551338		
1	1/4" x 2" NIPPLE	12		1551330		
-	1/4" STD PIPE	13			0502025	40'-0" LONG
8	1/4" x 90° UNION ELBOW	14		1589306		
1	1/4" NEEDLE VALVE	15		1614351		

REF 4H-278

1	U.S. SMELTING	7030-1112	
SETS USED FOR	ORD. No.	REMARKS	
NORDBERG MFG. CO. MILWAUKEE, WIS.			
SCALE	1 1/2" = 1'-0" TOLERANCE ON FINISHED DIMENSIONS IS .015" UNLESS OTHERWISE SPECIFIED		
FINISHED DIMENSIONS ARE NOT TO BE SQUARE UNLESS OTHERWISE SPECIFIED			
1/16" FINISH ON ALL FINISHED SURFACES EXCEPT AS OTHERWISE SPECIFIED			
DRAWN BY	G.J.S.	DATE	8-23-65
CHECKED BY	RGL	DATE	10-4-65
TRACED		APPROVED BY	R.C.F. 10-4-65
SUPERSEDES		SUPERSEDED BY	
PRODUCT	MINE HOIST ASSEMBLY		
COMMODITY CLASSIFICATION			
TITLE			
BRAKE CONTROL PIPING			
REV.	DESCRIPTION OF CHANGE	LOCAL DATE	BY DATE
1	ADDITIONAL PIPING TO LILLY STOP SOLENOID VALVE ADDED	8-21-65	G.J.S.
2	STOP		
ORDER NO.		SETS	
DWG. NO.	4H-728	DWG. SIZE	A
PART CODE NO.	GROUP 8		

BRAKE SYSTEM
 1. BRAKES OPERATED FROM MAIN
 2. BRAKES OPERATED FROM APPLER

THIS SYSTEM
 OPERATED BY THE MAIN
 AND THE APPLER



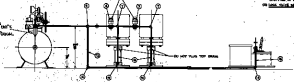
THIS PLATE IS OPERATED
 BY THE MAIN AND
 CONTROLS PLATE IN OPPOSITE
 DIRECTION FOR BRAKE APPLICATION

THIS PLATE

THIS SYSTEM IS OPERATED
 BY THE MAIN AND THE APPLER
 AND THE BRAKES ARE OPERATED
 BY THE MAIN AND THE APPLER
 AND THE BRAKES ARE OPERATED
 BY THE MAIN AND THE APPLER

THIS SYSTEM IS OPERATED
 BY THE MAIN AND THE APPLER

THIS SYSTEM IS OPERATED
 BY THE MAIN AND THE APPLER



NO.	DESCRIPTION	QTY.	UNIT	REMARKS
1
2
3
4
5
6
7
8
9
10

NO.	DESCRIPTION	QTY.	UNIT	REMARKS
1
2
3
4
5
6
7
8
9
10